

# LERÉVE

Hair, Beauty & Aesthetic  
Salon in Chalk, Gravesend



Book Your Appointments At  
[www.lerevehair2020.co.uk](http://www.lerevehair2020.co.uk)

## Services List

- Hair
- Aesthetics
- Nails
- Facials
- Make Up
- Bridal
- Holistic Therapies
- Psychic Readings
- Beauty
- Massage
- Eyebrows
- Eyelashes
- & Training Academy

### Contact Us:

01474 368778



91 Lower Higham Road,



Gravesend, Kent DA12 2NQ



# CHALK VILLAGE GARDENERS CLUB PROGRAMME & SCHEDULE 2026

Affiliated to: Royal Horticultural Society

Kent Federation of Horticultural Societies

*Gardening should be fun for everybody!*

## CHALK VILLAGE GARDENERS CLUB

Website: [www.chalkvillagegardenersclub.co.uk](http://www.chalkvillagegardenersclub.co.uk)

Facebook: [Chalk Village Gardeners Club – Gravesend Kent](#)

Email: [cvgclub1918@gmail.com](mailto:cvgclub1918@gmail.com)

### LIFE PRESIDENT

RAY SMITH

### CHAIRPERSON

Mrs Sandra Edmonds, 168 Brompton Farm Road, Strood

07738 416183 [sedmo1@blueyonder.co.uk](mailto:sedmo1@blueyonder.co.uk)

### TREASURER

Mrs Leigh Hoban, 129 Lower Higham Road, Chalk

### GARDENING EXPERT

Mr Melvyn Foster, 8 Pirrip Close, Chalk

### COMMITTEE MEMBERS

Mrs Helen Ansell, La Casa Blanca, Old Coach Road, Wrotham

Mr Dave Bennett, 195 Lower Higham Road, Chalk

Ms Julie Merritt, 267 Rochester Road, Chalk

Mrs Linda Rush, 3 Albion Road, Gravesend

Mr James Stevens, 120 Astra Drive, Gravesend

And finally..... Don't grow for the show, Show what you grow.

Thank you all for your continued support of the show and the committee.

[www.chalkvillagegardenersclub.co.uk](http://www.chalkvillagegardenersclub.co.uk) Email: [cvgclub1918@gmail.com](mailto:cvgclub1918@gmail.com)

But don't forget.....

Friday 6th March — an additional meeting with Sue Kent. Sue is a garden designer and a TV and Radio presenter.

Sue's talk will be "The quest for easy fruit and veg growing"



## Jake - your local barber

in Chalk

TEL: 078 77 03 73 00





**Wisley trip, Thursday 7th May 2026**

**Departing from Chalk Parish Hall 09.15 am**



**Sheffield Park trip, Thursday 17th September 2026**

**departing from Chalk Parish Hall 09.15 am**

## **2026 CHALK VILLAGE GARDENERS CLUB**

### **MEMBERSHIP AND MEETINGS**

**Meetings held at Chalk Parish Hall, usually on the 2nd Friday in each month, starting at 7.30pm unless stated otherwise**  
Meetings free to members, visitors £3 - refreshments included.

**Yearly membership is £17, payable to the Treasurer in January.**

Payment preferably by bank transfer to

Chalk Village Gardeners Club, Santander Bank, Sort Code: 09 01 29,

Account No: 24599407. Please quote your name as reference.

Payment may also be made by cash at the January meeting.

Look out for more details about meetings, outings, etc on the website

[www.chalkvillagegardenersclub.co.uk](http://www.chalkvillagegardenersclub.co.uk)

email [chalkpastandpresent@gmail.com](mailto:chalkpastandpresent@gmail.com) or phone Sandra on 07738 416183

- 9 Jan - Caroline Halfpenny - Dishing the Dirt
- 13 Feb - AGM - Cheese & Wine social after
- 6 Mar - Sue Kent - Gardeners World - The quest for easy fruit and veg growing
- 13 Mar - Tom Hart Dyke - My story
- 10 Apr - James Hughes - MDCV - Silverhand Vineyard growing in Kent
- 8 May - Fergus Garetts - Great Dixter - Succession Planting
- 12 Jun - Richard McKenna - Provender nurseries - Commercial growing of plants
- 10 Jul - Sue Marshall - Growing for Chelsea
- 14 Aug - Allen - Woodland Trust
- 4/5 Sep - Autumn Show
- 9 Oct - Josh Fenton - His life, background, show gardens and what's next
- 13 Nov - Helmsley Conservation Centre - An Animal Life
- 5 Dec - 2pm Christmas Social

## 2025 AGREED MEMBERS DISCOUNTS/BENEFITS

### Millbrook Garden Company

Station Road, Southfleet, Gravesend DA13 9PA. 01474 331135.  
Monday --Saturday 9am-5.30pm. Sunday 10am-4pm.  
Discount 10% on selected items (Club membership card)

### Provender Nurseries Wholesale

The Landscape Centre, Leydenhatch Lane, Swanley, BR8 7PS. 01322 662315.  
www.provendernurseries.co.uk. Monday-Friday 8am-5pm. Saturday 8am-12.  
Discount 10% off shop prices and sundries, 33% - 50% off plants (retail prices check VAT is included). **Please collect the trade card from Melvyn.**

### RHS garden entry discount card—for affiliated society members

Offers 2 adults 50% discount off entry to any RHS garden  
**Please collect the card from Melvyn.**

### Hartley & District Horticultural Society

Attend their club meetings for free. Programme available, just ask at their meeting



**JAGS PROPERTY GROUP**  
jagspropertygroup.com

Scan to Book a  
FREE Valuation

JAGS Property Group is a New Generation of Estate Agency in the UK.

We help to sell your home in a more personal and precise fashion to help make the process much smoother as well as achieving the best result. The service is about being available for communication whenever you need us, as well as offering quality and reliable advice to ensure that we sell your home quickly whilst also achieving the best possible price.

Head On Over to Our Website to Learn More & Book a FREE Valuation!

Or call 01474 643101

**CHALK VILLAGE GARDENERS CLUB CONSTITUTION, SAFEGUARDING & GDPR POLICY AND THE 50/50 CLUB RULES CAN BE FOUND ON OUR WEBSITE. [www.chalkvillagegardenersclub.co.uk](http://www.chalkvillagegardenersclub.co.uk)**



**CHALK VILLAGE GARDENERS CLUB 50/50 CLUB  
OPEN TO ALL. 2026 TICKETS NOW ON SALE**

**Have you joined yet?**

**A unit for 12 months, January-December, costs just  
£12.**

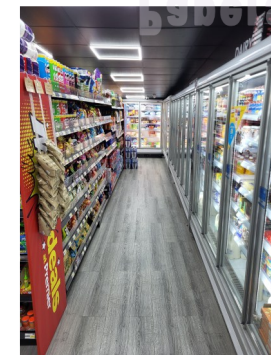
**3 cash prizes every month. 1st draw takes place in March.**



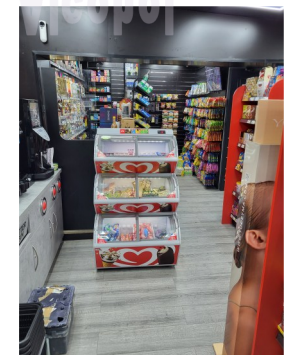
**Papers**

**Provisions**

**Alcohol**



**Speciality  
Coffees  
Lottery  
Special offers  
and much more**



## CRAFT CLASSES: Classes 73 – 81a

- 73. 1 Embroidered item, Cross Stitch or Tapestry
- 74. 1 Hand knitted item of clothing using any yarn
- 74a. 1 Hand knitted item – other than Class 74
- 75. 1 Hand sewn item
- 76. 1 Photograph of a plant or flower in your garden  
(Unframed. Maximum size 8" x 6")
- 77. 1 Crocheted item of clothing using any yarn
- 77a. 1 Crocheted item - other than Class 77
- 78. 1 Dried Flower Table Arrangement. Min. 9" x 9", Max 12" x 12".  
(Class 78: Artificial or Silk flowers are not permitted. Rule 5 does not apply)
- 79. 1 Fresh Flower Table Arrangement. Min 9" x 9", Max 12" x 12".  
(Rule 5 does not apply.)
- 80. 1 Handmade wooden item - (15" maximum size)
- 81. 1 Decorated 6" pot
- 81a. 1 Handmade item not described above

## JUNIOR EXHIBITORS: CLASSES 80 – 84

There are four age groups in the Junior category—Under 5, 5-7 8-10 and 11-16 that are judged separately. Please state your age on the entry form.

- 80. Make a small seed tray garden - (Seed tray should be approx. 14" x 9")
- 81. Colour a provided poster advertising the Show, using any medium
- 82. A funny vegetable or character made from a vegetable, or vegetables, created and made by the exhibitor
- 83. 5 decorated fairy cakes/cupcakes
- 84. Largest sunflower head - No stalk  
(The sunflower may not have any petals at this time of year but is still eligible to be entered into the Show)

# Autumn Show

## September 5th 2026



The following pages contain the new revamped schedule and all the information you need to enter the categories in the show.

**Doors open for visitors 2.30pm. Admission £1**

Refreshments

Mega Raffle

RSPB

Gravesend

Kent Wildlife

Beekeepers

Trust

Woodcarvings  
in aid of charity

Carnivorous

Plant sale

## RULES

1. All sections and Classes are open to Club Members and residents of Chalk.
2. Entry forms and entry fees can be handed to any Committee Member by the Thursday before the Show; or between 7.00 and 8.30 pm on the Friday prior to the show in the Parish Hall.  
**Late entries will be accepted up to 11.00am on Show Day.**
3. Exhibitors may only have ONE entry in each Class.
4. 1st, 2nd and 3rd place prizes awarded at the Judge's discretion.
5. Only exhibitors own produce is to be shown except where stated in the schedule. Exhibitors are requested to name varieties if known. Flowers are to be staged in the Club vases.
6. No exhibits to be removed before 4pm or as directed on the day.
7. Exhibits not collected at the end of the show will be sold.
8. In the event of a tie for highest points, the award will be made at the discretion of the Committee.
9. The Judge's decision is final.
10. Exhibits to be staged between 9.00 and 11.30 am on the day of the Show.
11. Only the appointed stewards will be allowed in the Hall while judging is taking place.
12. Club Cups and Trophies will only be awarded to Club members.
13. No craft entry may be exhibited more than once.

**If you have any questions regarding entries to the Show please ask the Chairperson – Sandra Edmonds**

## VERITY ROWBOTTOM TROPHY: Classes 61 – 72

61. **5 Biscuits**
62. **Tea bread**
63. **Vegetable cake/bake**
64. **Chocolate cake**
65. **Any other cake/bake - (No items that need to be kept refrigerated)**
66. **Coffee & Walnut cake**
67. **5 Cheese Scones**
68. **Bottle of Homemade Fruit Cordial**
69. **Bottle of Homemade Fruit Spirit**  
**(Classes 61 - 72b, made to your own choice of recipe).**  
**(Classes 61 - 67, plastic covers will be provided. Cake stands or plates will NOT be provided).**
70. **1 Jar of Jam, soft or stone**
71. **1 Jar of Marmalade**
72. **1 Jar of Jelly**
- 72a **1 Jar of Chutney**
- 72b **1 Jar of Pickles**  
**(Classes 70 - 72b, jars should be as near to 1lb as possible)**

### MRS GRIMSHAW CUP: Classes 37 – 50

37. 6 Stems of Flowers, two or more kinds (not scheduled)
38. 6 Stems of Flowers (not scheduled)
39. 1 Pot Plant, Flowering. Pot grown, up to and including 6" pot
40. 1 Pot Plant, Flowering. Pot grown, 7" to 15" pot
41. 1 Pot Plant, Foliage. Pot grown, up to and including 6" pot
42. 1 Pot Plant, Foliage. Pot grown, 7" to 15" pot
43. 1 Gladioli
44. 3 Gladioli
45. 5 Asters
46. 1 Rose - Hybrid Tea - Specimen Bloom
47. 5 Stems of Roses - Hybrid Tea or Floribunda
48. 1 Small bikini vase of mixed herbs  
(Classes 37, 38 & 43 to 48, the stems should be as long as possible. Vases will be provided)
49. 1 Cactus or Succulent
50. 1 Large Vase of Mixed Flowers

### REDESELL CUP: Classes 51 – 57

51. 5 Blooms, any Dahlia - 1 flower per stem
52. 3 Dahlias the same
53. 3 Dahlias over 6"
54. 3 Dahlias under 6"
55. 1 Dahlia over 6"
56. 1 Dahlia under 6"
57. 5 stems any Dahlias—Multiple flowers per stem  
(Classes 51—57, Dahlias must be entered into the correct class. If unsure please ask the Chairperson. The stems should be as long as possible. Vases will be provided.)

### ENTRY FEES/PRIZES

**Entry Fee :** 20p per item entered.

#### **Prizes:**

General Class prizes: 1st - 40p. 2nd - 25p. 3rd - 20p

Collection of vegetables prizes: 1st - £1.00. 2nd - 50p. 3rd - 30p.

### AUTUMN SHOW AWARDS

<b>T.H. Brown Cup</b>	<b>most points in Classes 1 – 21a</b>
<b>G. Rose Trophy</b>	<b>most points in Classes 22 – 30</b>
<b>D. Waghorne Fuller Cup</b>	<b>most points in Classes 31 – 36</b>
<b>Mrs Grimshaw Cup</b>	<b>most points in Classes 37 – 50</b>
<b>Redsell Cup</b>	<b>most points in Classes 51 – 57</b>
<b>Verity Rowbottom Trophy</b>	<b>most points in Classes 61 - 72b</b>
<b>Elsie Philips Challenge Shield</b>	<b>most points in Classes 73 – 81a</b>
<b>Chairman's Trophy</b>	<b>best exhibit in Classes 1 – 57</b>
<b>Hilda Moat Tray</b>	<b>best exhibit in Classes 73 – 81a</b>
<b>Shirley Cup</b>	<b>most points in Junior Classes 80 – 84</b>
<b>Ted Jackson Memorial Vase</b>	<b>best in show over all classes</b>
<b>Centenary Cup</b>	<b>exhibit chosen by a supportive local business</b>
<b>Container Shield</b>	<b>best hanging basket (judged in the summer)</b>

#### T. H. BROWN VEGETABLE CUP: Classes 1 – 21

1. **Top Tray: Collection of 4 different kinds of vegetables from Classes 2 - 12, displayed on board 18" x 24". (Class 1. Covered boards supplied)**
2. **5 Potatoes white**
3. **5 Potatoes coloured**  
(Classes 2 & 3 to be no larger than duck egg size)
4. **5 Runner beans**  
(Class 4 can be straightened by rolling in a damp tea towel)
5. **3 Beetroot - tops trimmed to 3"**
6. **3 Onions - maximum 3" diameter**
7. **3 Onions - minimum 3" diameter**  
(Classes 6 & 7 tops to be raffia whipped. Staged on rings/soft collars. Roots trimmed back to basal plate)
8. **6 French beans**
9. **3 Carrots - with 2" stalk**
10. **2 Sweet Peppers / 6 Chilli peppers.**
11. **2 Courgettes**
12. **6 Radishes**
- 12a **1 Squash**
13. **1 Table marrow**
14. **1 Cucumber**
15. **1 Corn - on - the - cob (kernels to be exposed one side)**
16. **1 Lettuce**
17. **Largest potato**
18. **Longest runner bean**
19. **Heaviest onion - not trimmed**
20. **Heaviest marrow**
21. **Any vegetable not listed above, no fewer than 2 or more than 6**
- 21a. **Any vegetable that adults will find amusing.**  
(Class 21a will not be included in the T.H. Brown Vegetable Cup points total).

#### G. ROSE FRUIT TROPHY: Classes 22 – 30

22. **1 Truss Tomatoes – small type, max. 1½" diameter**
23. **1 Truss Tomatoes – large type, min 1½" diameter**
24. **1 plate of 10 Tomatoes – small type max. 1½" diameter**
25. **1 plate of 5 Tomatoes – large type min. 1½" diameter**  
(Classes 24 & 25. Should have green stalks attached)
26. **6 Plums or Gages**
27. **4 Dessert Apples**
28. **4 Cooking Apples**
29. **4 Pears**
30. **Any fruit not listed above, no fewer than 2 or more than 6**  
(Classes 22 – 30. Plates will be provided)

#### D. WAGHORNE FULLER CUP: Classes 31 – 36

31. **3 Blooms any Chrysanthemum**
32. **3 Blooms Chrysanthemum - 3 stems the same**
33. **3 Chrysanthemums over 5" diameter**
34. **3 Chrysanthemums under 5" diameter**
35. **3 Sprays of Chrysanthemum**
36. **5 Blooms any Chrysanthemum**  
(Classes 31 – 36. Chrysanthemums must be entered into the correct class. Vases will be provided. If unsure, please ask the Chairperson)